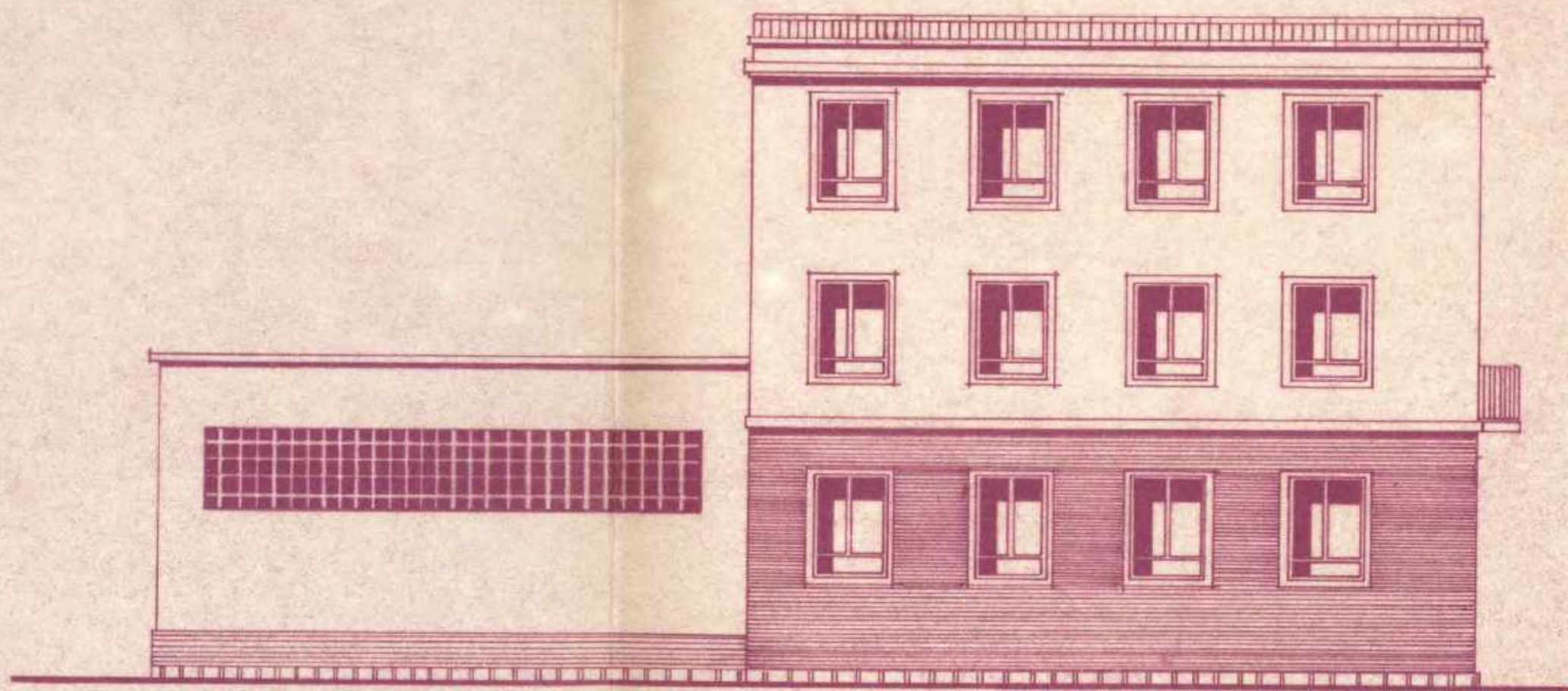
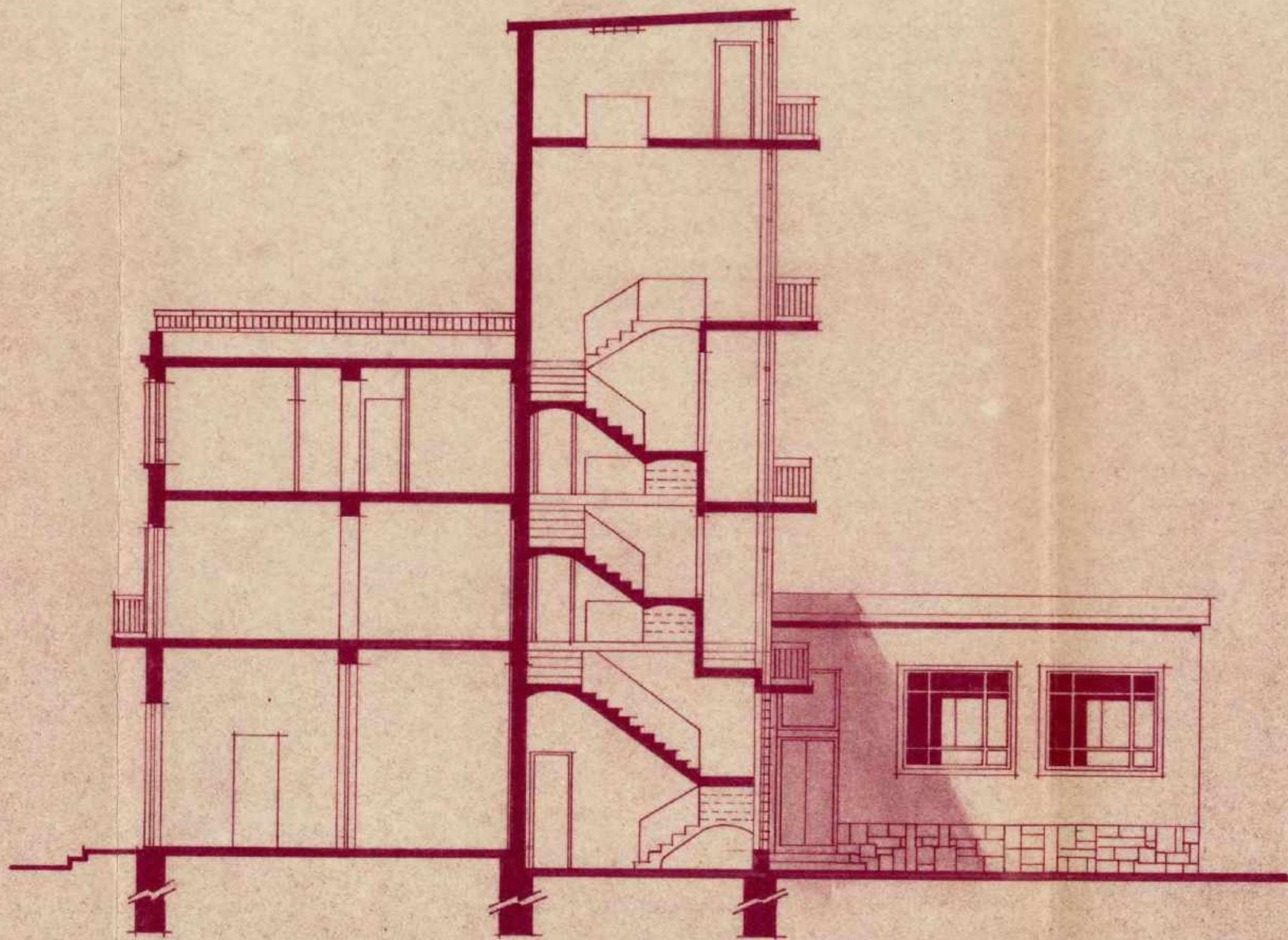


FACHADA A CALLE M. LOPEZ QUEREDA

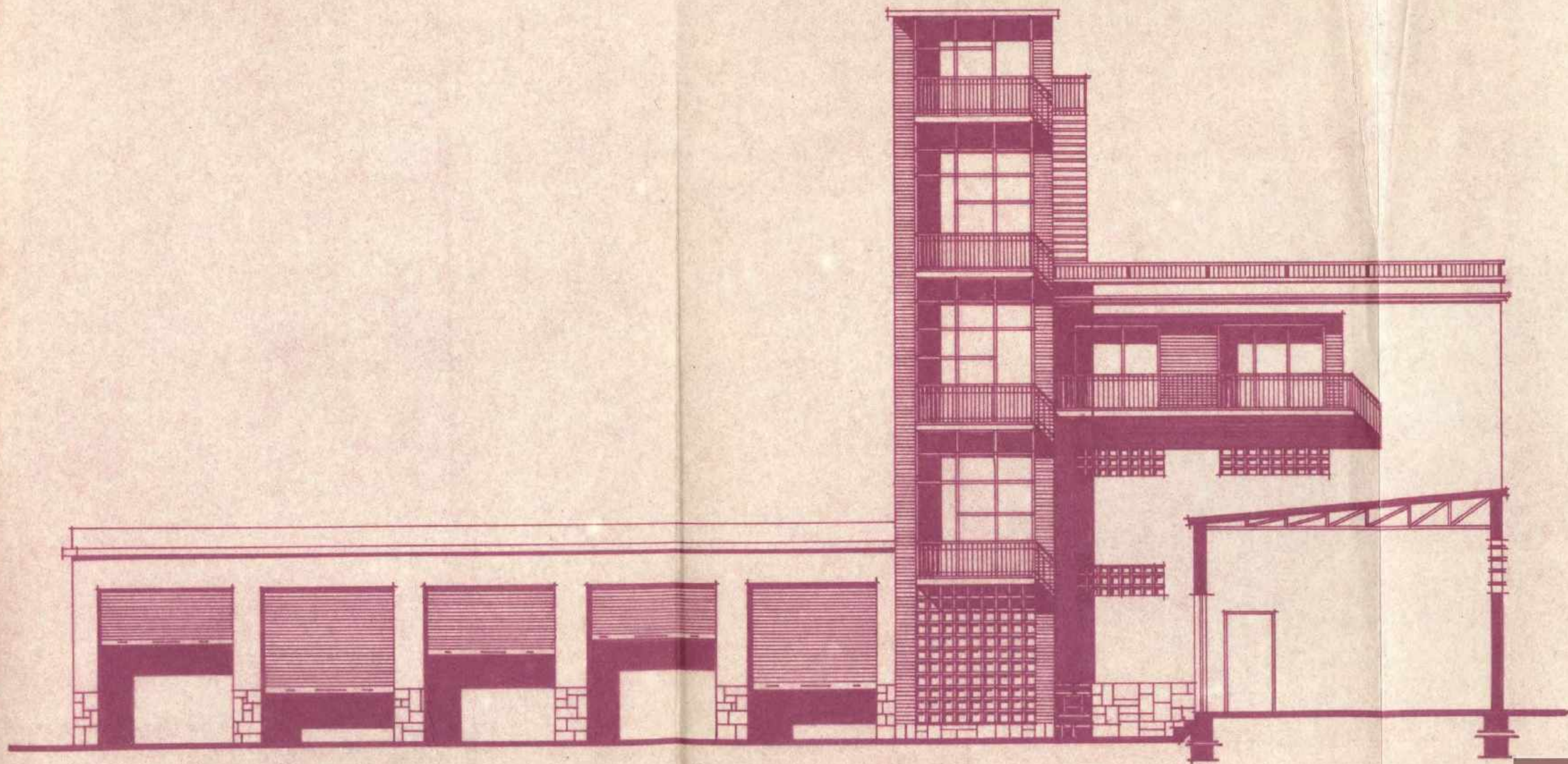


FACHADA A C/ JOSEFA ALCORTA



SECCION B - B

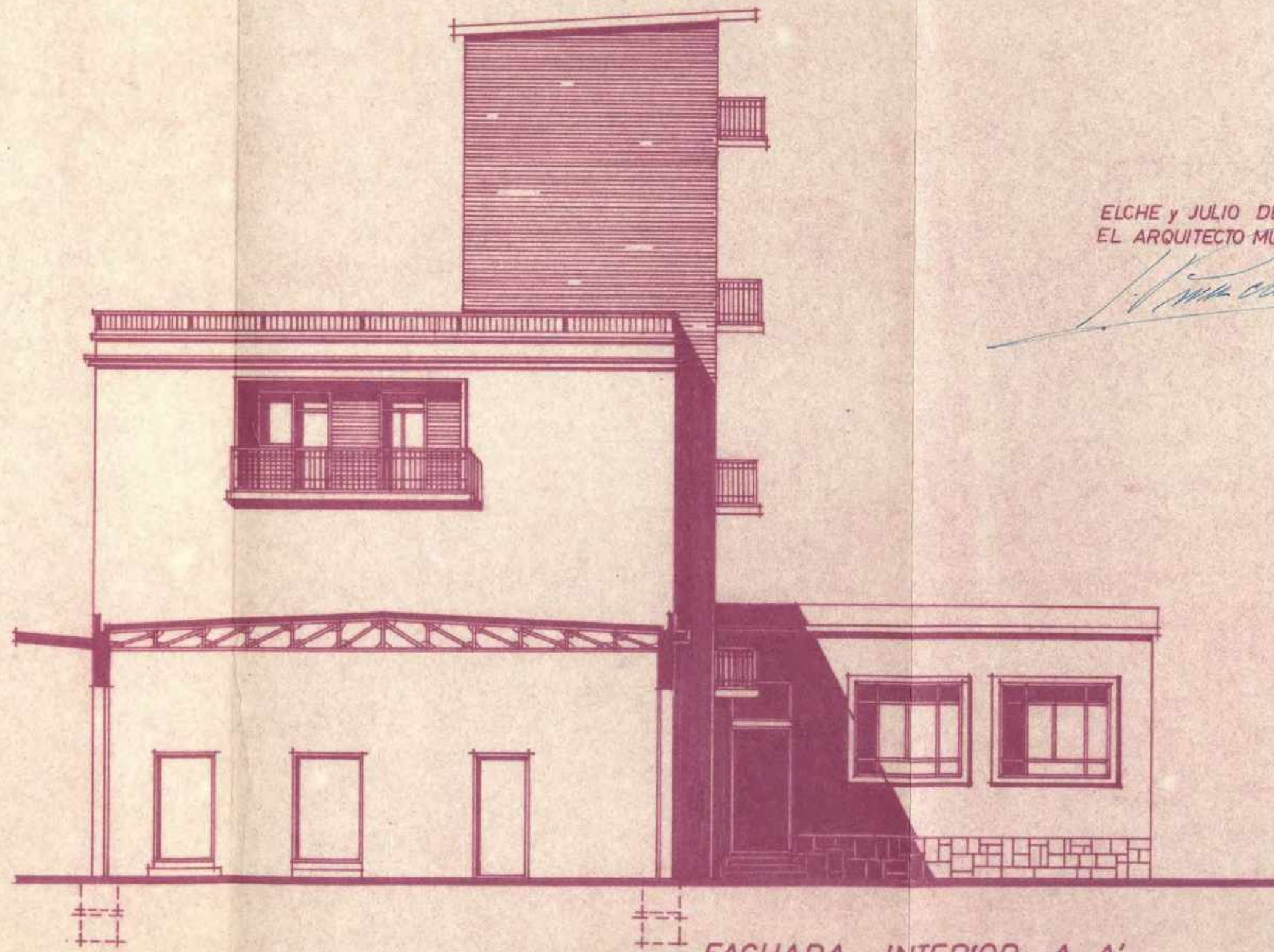
[Handwritten signature]
A. 19.



AHME, sig. 869-3

FACHADA INTERIOR C-C'

ESCALA 1:100



ELCHE y JULIO DE 1964
EL ARQUITECTO MUNICIPAL

[Handwritten signature]

AHME, sig. 869-3

FACHADA INTERIOR A-A'

Archivo
Histórico
Municipal
de Elche

Arxiu
Històric
Municipal
d'Elx